

# — GOKU Versatile F405 2S AIO w/build-in ELRS2.4G RX —

## - GOKU Versatile F405 2S AIO w/build-in ELRS2.4G RX -

V.I.O

### Flight Control:

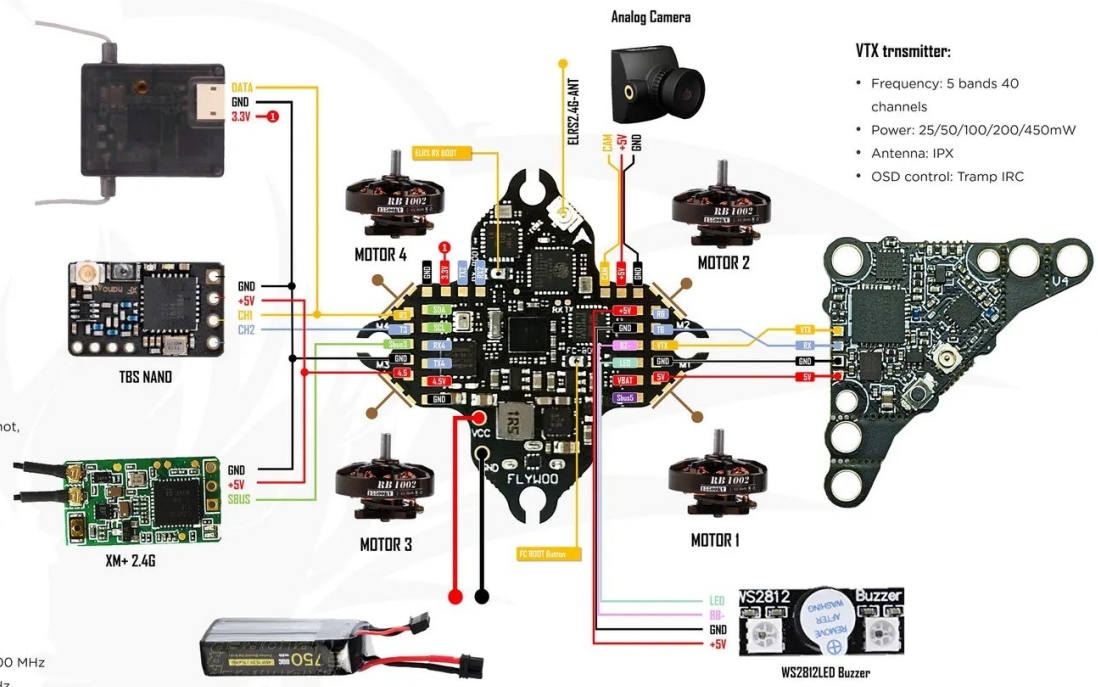
- SIZE: 30\*30mm Weight: 4.1g
- Hole: 25.5\*25.5-3mm
- MCU: STM32F405
- UARTS: 1,2,3,4,5,6
- MOTOR: M1-M4 OUTPUT
- I2C: SCL/SDA
- GYRO: MPU6000/BMI270
- Barometer: BMP280
- LED: 2\*WS2812 Flash: 8M
- BEC: 5V 2A
- Firmware: FLYWOOF405S\_AIO

### BLHELIX ESC:

- Built-in 1S/2S 12A BL\_S 4in1 ESC
- Support Oneshot125, Oneshot42, Multishot,
- Dshot150, Dshot300, Dshot600
- Input Voltage: 1-2S Lipo
- Firmware: BLHELIX\_S
- Firmware: Z\_H\_30\_REV16.7

### ELRS2.4G RX:

- ESP8285 MCU
- SX1280IMLRT RF Module
- Frequency Range: 2400 MHz to 2500 MHz
- Maximum receive refresh rate: 500Hz
- Minimum receiver refresh rate: 25Hz
- Serial: UART 1
- Firmware: Flywoo EL24P 2400 RX
- Version: 2.X.X



### VTX transmitter:

- Frequency: 5 bands 40 channels
- Power: 25/50/100/200/450mW
- Antenna: IPX
- OSD control: Tramp IRC

**GOKU**

WWW.FLYWOO.NET

## Warning

When you receive The FC, please follow the steps below to check if the FC function is complete before soldering and updating the firmware.

- Place the FC horizontally and connect to Betaflight. Perform calibration and check if the direction is correct.
- Open the sensor interface and check whether the fluctuations of the gyroscope, accelerometer, and barometer (If Available) are normal
- If you need to upgrade the firmware, please export your FC settings before upgrading. To prevent loss of configuration. At the same time, please use the correct firmware according to the target given in the manual.