

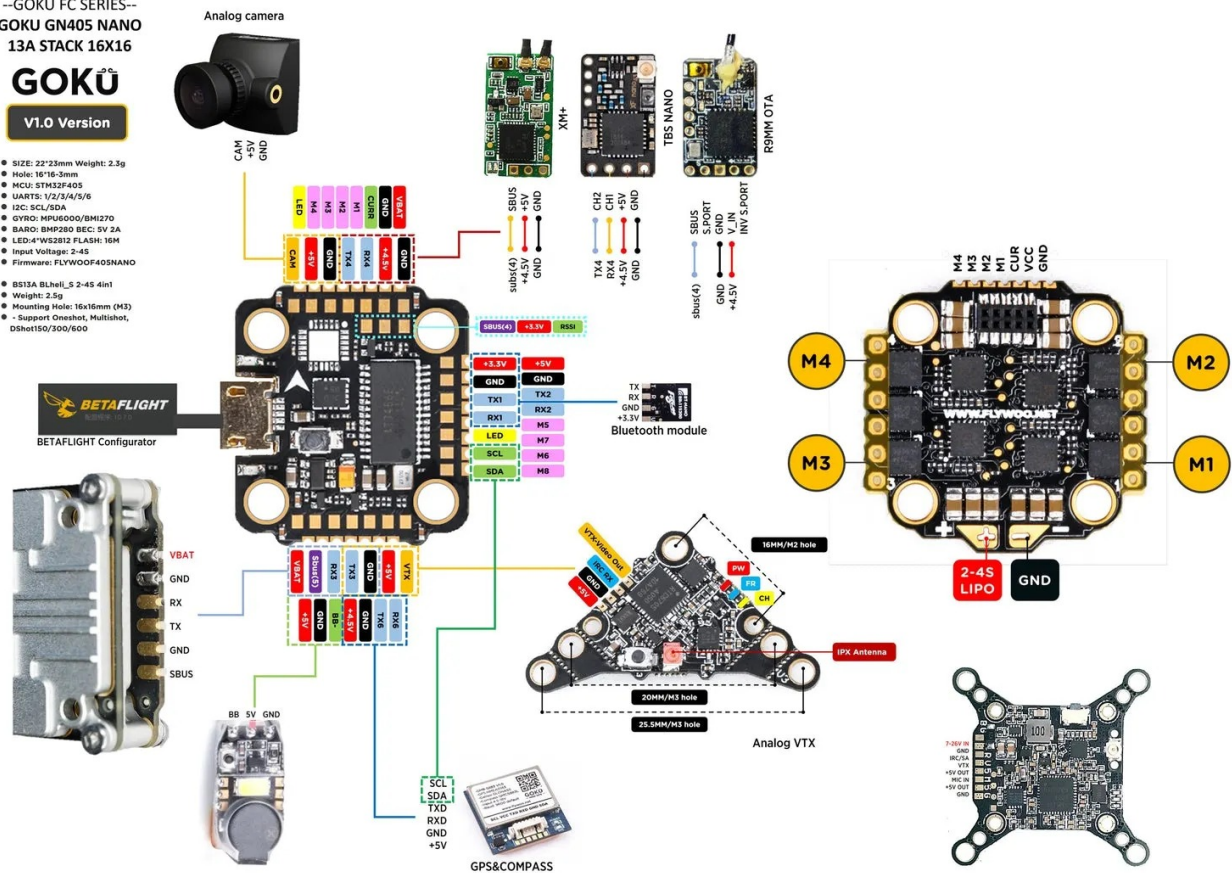


# GOKU GN405 NANO V1.0

--GOKU FC SERIES--  
GOKU GN405 NANO  
13A STACK 16X16

**GOKU**  
V1.0 Version

- SIZE: 22\*23mm Weight: 2.3g
- Hole: 16\*16-3mm
- MCU: STM32F405
- UARTS: 1/2/3/4/5/6
- I2C: SCL/SDA
- GYRO: MPU6000/BMI270
- BARO: BMP280 IIC: 3V 2A
- LED: WS2812 FLASH: 16M
- Input Voltage: 2-4S
- Firmware: FLYWOODF405NANO
- B513A BLheli\_s 2-4S 4in1
- Weight: 2.5g
- Mounting Hole: 16x16mm (M3)
- - Support Oneshot, Multishot, Dshot150/300/600



## Warning

When you receive The FC, please follow the steps below to check if the FC function is complete before soldering and updating the firmware.

- Place the FC horizontally and connect to Betaflight. Perform calibration and check if the direction is correct.
- Open the sensor interface and check whether the fluctuations of the gyroscope, accelerometer, and barometer (If Available) are normal
- If you need to upgrade the firmware, please export your FC settings before upgrading. To prevent loss of configuration. At the same time, please use the correct firmware according to the target given in the manual.